



HEAD OFFICE  
9, Ahbab Colony Road, Opposite Canal View Housing Society, Multan Road, Lahore.  
Phone: +92-42-5410136 | Mobile: +92-321-5441136, 300-4726510, 300-4104494

DYNAMIC ENTERPRISES offers a variety of Laboratory Products, including but not limited to: MS & SS Furniture, Fume hoods, Countertops, Employee Lockers, Cupboards, Cross over Benches, Gowning Cabinets, Storage Racks & Safety Cabinets. We also offer furniture for Offices, Classrooms, Auditoriums and Kitchens.

Email: [dynamicenterpriseslhr@gmail.com](mailto:dynamicenterpriseslhr@gmail.com) | URL: [www.dynamicenterprises.com.pk](http://www.dynamicenterprises.com.pk)



SCAN TO DOWNLOAD A DIGITAL COPY OF THIS CATALOG



LABORATORY SOLUTIONS  
[dynamicenterprises.com.pk](http://dynamicenterprises.com.pk)



# ABOUT US

**At Dynamic Enterprises**, offers a wide variety of Laboratory Furniture to suit the needs of every Laboratory. Fume hoods, Laboratory Tables, Storage Cupboards, Change Room Lockers, Sink Units, Chemical Storage Cabinets, Mobile Racks, Clean Room Furniture and other MS & SS furniture can be purchased as standard units or individually modified according to the needs of the customer.

Dynamic Enterprises is listed amongst the leaders in modern metal furniture. Dynamic Enterprises versatility is authenticated in various specialty solutions, supported with highly skilled labor who are engaged in continuous improvisation & bringing out products and solutions, backed with outstanding service that outclasses any similar products in the market.

We excel at designing laboratories and planning ergonomic, convenient layouts tailored to the needs of laboratory staff and individual safety standards. We can lend a helping hand for designers and engineers who are modeling Furniture layouts. We also provide post-purchase servicing for our furniture. Preventative furniture systems maintenance carried out by our dedicated team is the key to a safe and convenient workplace.

Dynamic Enterprises commitment to quality is reflected at all stages. Strict Quality control procedures are followed right from material selections procurements, receiving, processing production, works in progress and end products monitoring, timely supplies, systematic and accurate installation, project handover and appropriate service backup.

Thank you and Best Regards,  
**Muhammad Yaseen Baksh**  
CEO

## PRODUCT RANGE

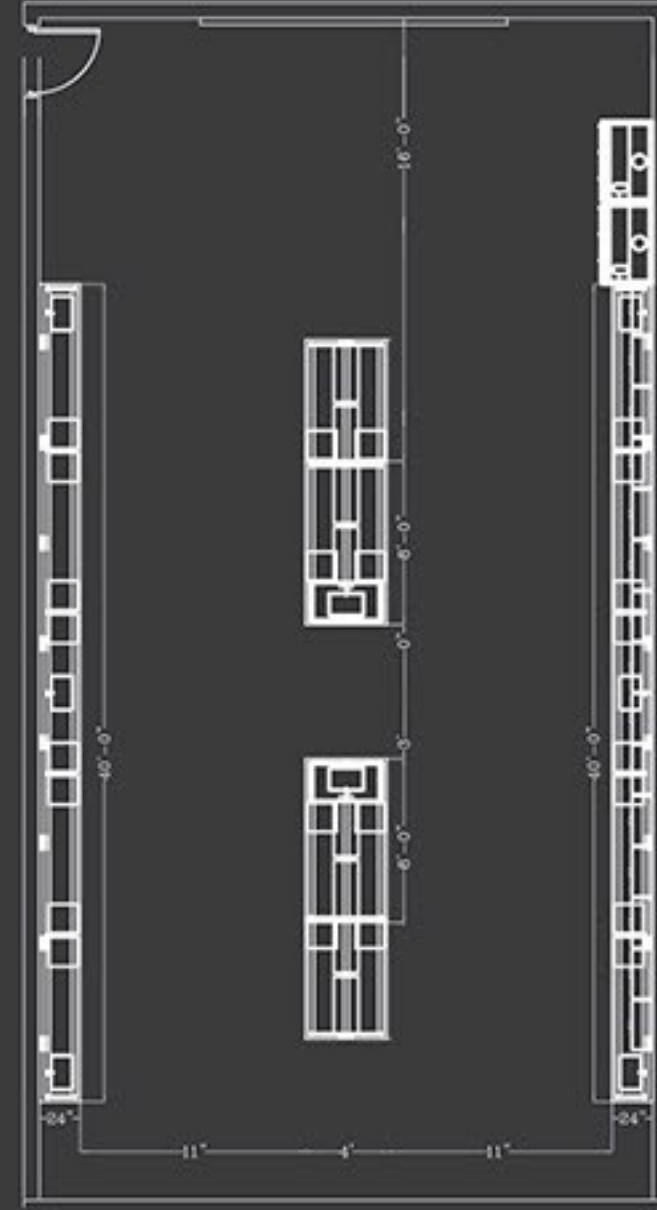
# CONTENTS

<b>01</b>	Laboratory Furniture	<b>27</b>	Fume Hoods & Chemical Storage
<b>11</b>	Institutional Furniture	<b>29</b>	Auditorium Chairs
<b>13</b>	Lockers & Cupboards	<b>31</b>	Office Furniture
<b>15</b>	Compact Shelving / Racks	<b>33</b>	Dyna Facilities/Machinery
<b>19</b>	Stainless Steel Products	<b>35</b>	Project Highlights
<b>23</b>	Industrial Furniture	<b>36</b>	Dyna Clients List

# TYPICAL LAYOUTS & 3D ELEVATION DESIGN BY DYNAMIC ENTERPRISES



**ACTUAL VIEW**  
Actual Picture of Furniture Installed at Customer Premises



**2D LAYOUT PLAN**  
As Per Customer Demand



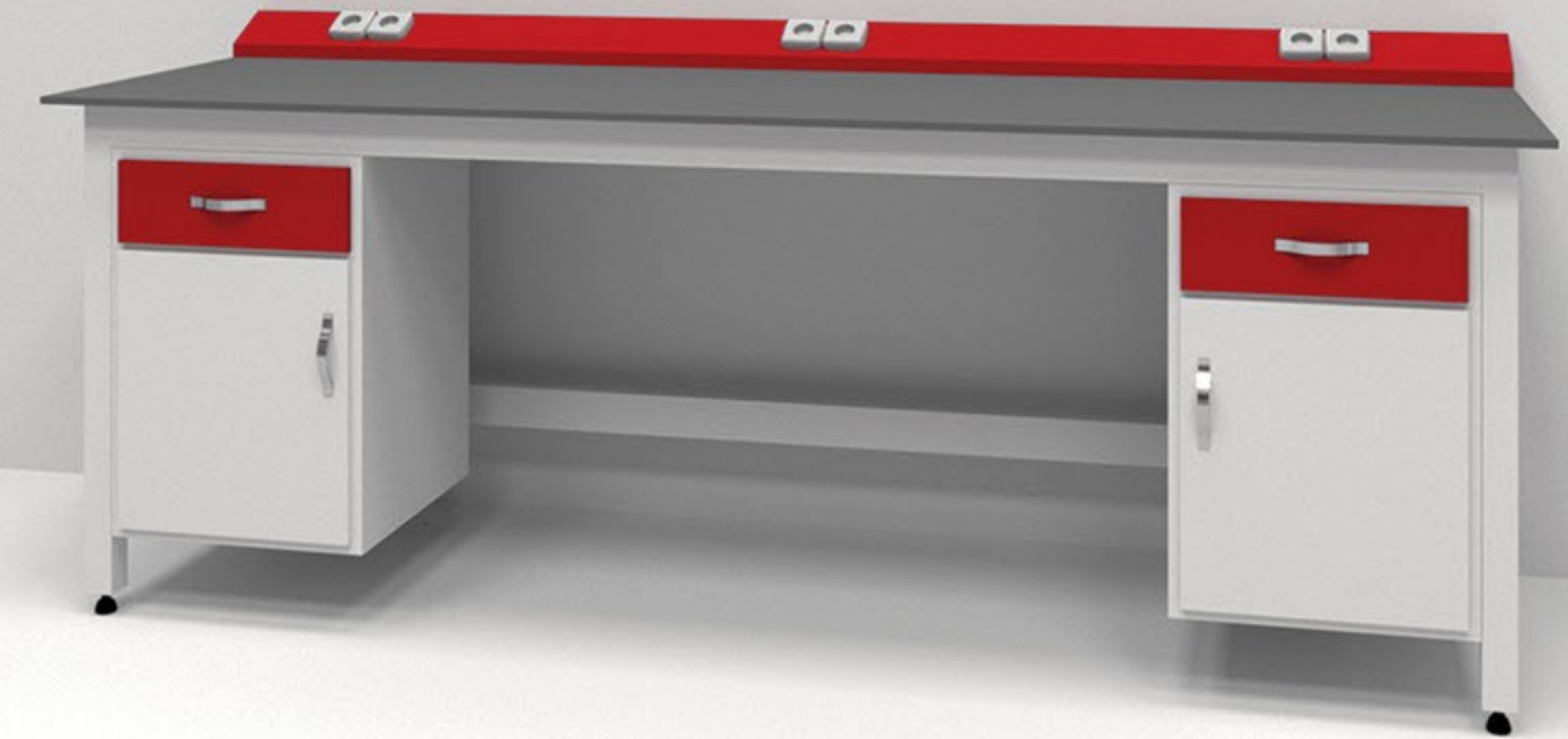
**3D CONCEPTUAL VIEW**  
Our Presentation

## OUR LAB DESIGN OPTIONS

We are driven to create modular, custom lab furniture solutions for our customers.

- 01** Suspended Cabinet System
- 02** Floor Standing Cabinet System
- 03** Mobile Cabinet System

**01**



**02**



**03**





**ACTUAL VIEW**  
Actual Picture of Furniture Installed at Customer Premises

# SUSPENDED CABINET SYSTEM

## ONE OF A KIND SOLUTIONS



**01** Counter along the wall with Suspended Cabinet, PP Sink and Faucet.

**02** Counter along the wall with Suspended Cabinets & Electric Socket Panel.

**03** Counter along the wall with Suspended Cabinets & Electric Socket Panel.

**04** Island Table with Suspended Cabinets, Sink Unit, PP Sink, Faucet, Pegboard & Reagent Racks.

Different lab requirements call for different designs. We design our lab solutions to fit your lab development requirements, including: **Micro Labs, Instrument Labs, Cleanroom Areas, Clinical and Wet Labs.**



**01**  
**SIZE (in)**  
96 x 30 x 36  
Or as per requirement

**MATERIAL**  
MS



**02**  
**SIZE (in)**  
96 x 30 x 36  
Or as per requirement

**MATERIAL**  
MS



**03**  
**SIZE (in)**  
96 x 30 x 36  
Or as per requirement

**MATERIAL**  
MS



**04**  
**SIZE (in)**  
120 x 60 x 36  
Or as per requirement

**MATERIAL**  
MS



**ACTUAL VIEW**  
Actual Picture of Furniture Installed at  
Customer Premises

# FLOOR STANDING CABINET SYSTEM

## BENCHMARK IN LABORATORY PRODUCTS

**01** Counter along the wall with  
Floor Standing Cabinets  
and Electric Panel.

**02** Island Table with Floor Standing  
Cabinets, Sink Unit, PP Sink,  
Faucet, Pegboard & Reagent  
Racks.

**03** Counter along the wall with  
Floor Standing Cabinet, PP  
Sink and Faucet.

**04** Island Table with Floor Standing  
Cabinets, Sink Unit, PP Sink,  
Faucet, Pegboard & Reagent  
Racks.

Our Laboratory Furniture can easily be adapted to ever  
new situations in a room due to its flexible/modular units

**01**



**SIZE (in)**  
96 x 30 x 36  
Or as per requirement

**MATERIAL**  
MS

**02**



**SIZE (in)**  
144 x 60 x 36  
Or as per requirement

**MATERIAL**  
MS

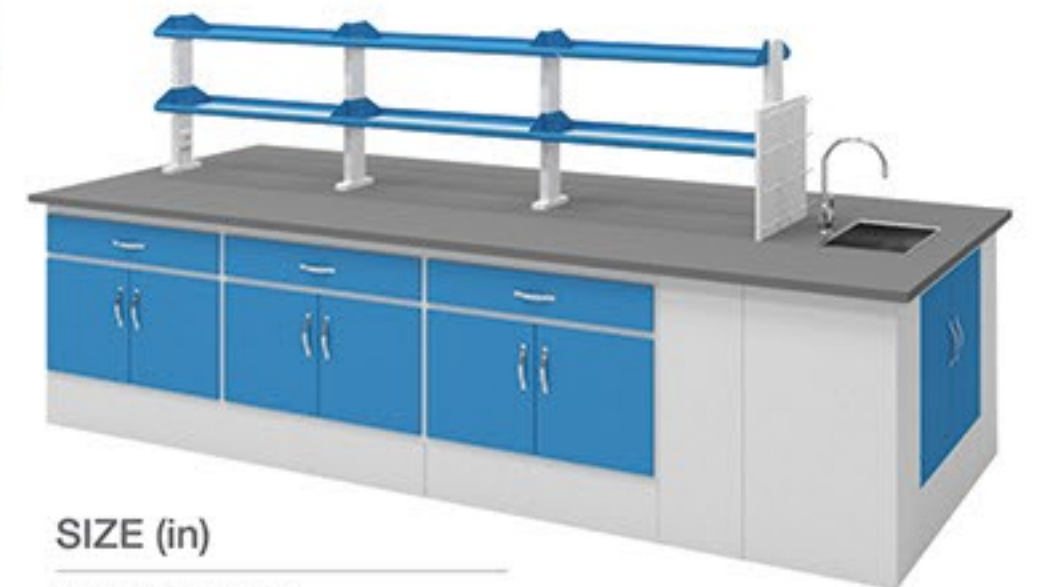
**03**



**SIZE (in)**  
96 x 30 x 36  
Or as per requirement

**MATERIAL**  
MS

**04**



**SIZE (in)**  
120 x 60 x 36  
Or as per requirement

**MATERIAL**  
MS



**ACTUAL VIEW**  
Actual Picture of Furniture Installed at Customer Premises

# MOBILE CABINET SYSTEM

FUNCTIONALITY AT IT'S BEST

**01** Counter along the wall with Mobile Cabinets and Electric Panel.

**02** Mobile Table with Suspended Cabinets & Electric Panel.

**03** Counter along the wall with Mobile Cabinet, PP Sink & Faucet.

**04** Island Table with Mobile Cabinets, Sink Unit, PP Sink, Faucet, Pegboard & Reagent Racks.

Our products are functional, heavy duty and well designed. We offer a variety of colors and finishes for you to create an environment in which people are eager to work.



**01**  
SIZE (in)  
96 x 30 x 36  
Or as per requirement

MATERIAL  
MS



**02**  
SIZE (in)  
96 x 30 x 36  
Or as per requirement

MATERIAL  
MS



**03**  
SIZE (in)  
96 x 30 x 36  
Or as per requirement

MATERIAL  
MS



**04**  
SIZE (in)  
144 x 60 x 36  
Or as per requirement

MATERIAL  
MS

# TABLE TOP MATERIALS TO SUIT YOUR NEEDS

## DYNAMIC ENTERPRISES

Depending on your application, we can provide you seamless chemical, electrical, heat and water resistant Table Tops

- PHENOLIC RESIN
- STAINLESS STEEL
- CORIAN
- MARBLE / GRANITE
- SOLID WOOD/LAMINATED WOOD TOPS
- TEMPERED GLASS
- BAKELITE

Other materials may also be provided on request.

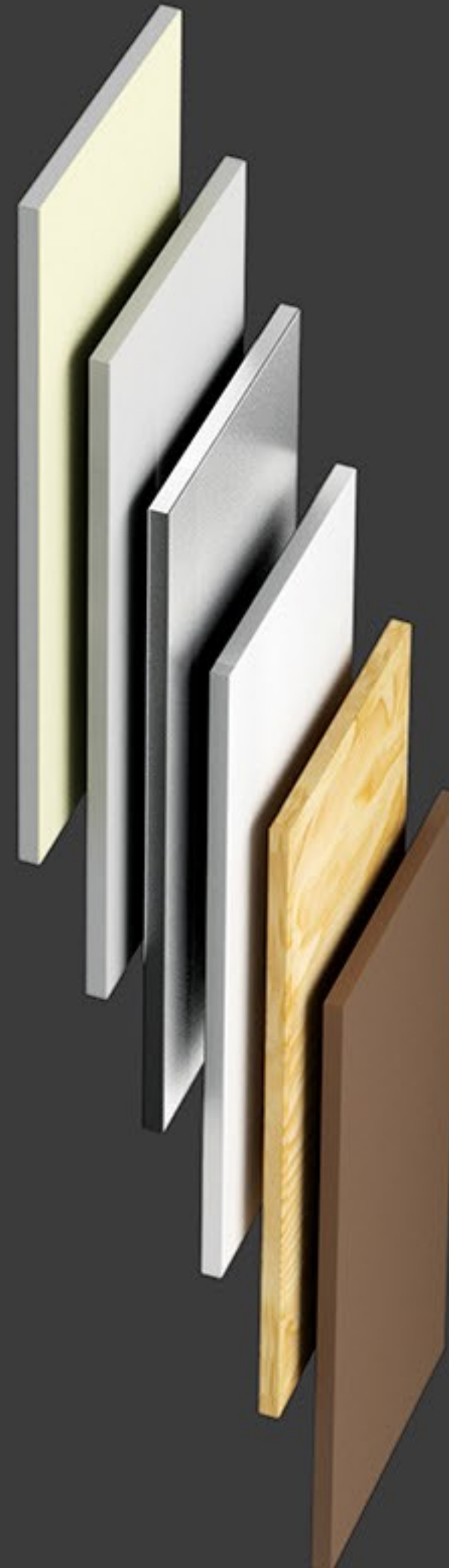


Stainless Steel Table Top

Phenolic Table Top

Bakelite Table Top

### MATERIAL OPTIONS As Per Requirement



# OTHER LAB ESSENTIALS



Polypropylene Sink (PP)



Stainless Steel Sink



Vibration Free Table

# INNOVATION OF LABS

Labs tend to have consistent basic needs, a wide assortment of products and sizes to accommodate individual requirements. We have sinks available in Polypropylene, Stainless and Ceramic. We also provide imported PP Pegboards and Stainless Steel Emergency Eye Wash Showers.



PP/SS Pegboards



Wall Mounted SS Sink



Gas & Water Valves



Water Faucets (1-way & 3-way)



Stainless Steel Emergency Eye Wash Showers



**ACTUAL VIEW**  
Actual Picture of Furniture Installed at  
Customer Premises

## DESIGN POSSIBILITIES

FOR YOUR I.T. LABS &  
CLASS ROOMS ARE  
ENDLESS WHEN YOU  
CHOOSE FURNITURE  
FROM US.

Our designers are familiar with the  
naunces of floor planning for learning  
enviornments & will help you to  
create a functional &  
productive Space.



Computer Table with  
Keyboard and CPU Tray

**SIZE (in)**

72 x 24 x 30

**MATERIALS**

MS, WOOD

Classroom Benches with  
Revolving Chairs



Lab Chairs





# LOCKER ROOM EYE CANDY WITH CREDENT OF USABILITY

# AN ASSORTMENT BASED ON COLOR AND USABILITY



50 Compartments Pigeon Hole



8 Compartments Employee Locker



6 Compartments Employee Locker



9 Compartments Employee Locker



Full Glass Doors Cabinet



Half Glass & Half Solid Doors Cabinet



Executive Gowning Cabinet

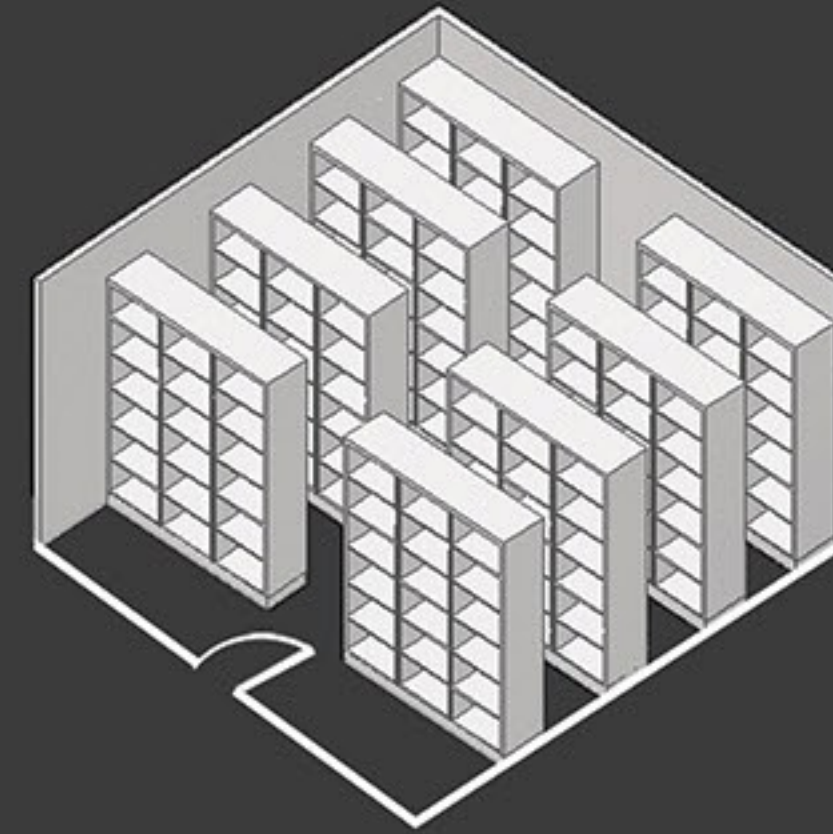


Full Solid Doors Cabinet

# DYNAMIC SPACESAVER MOVABLE SHELVING SYSTEM



ACTUAL VIEW  
Actual Picture of Shelving Unit Installed at Customer Premises

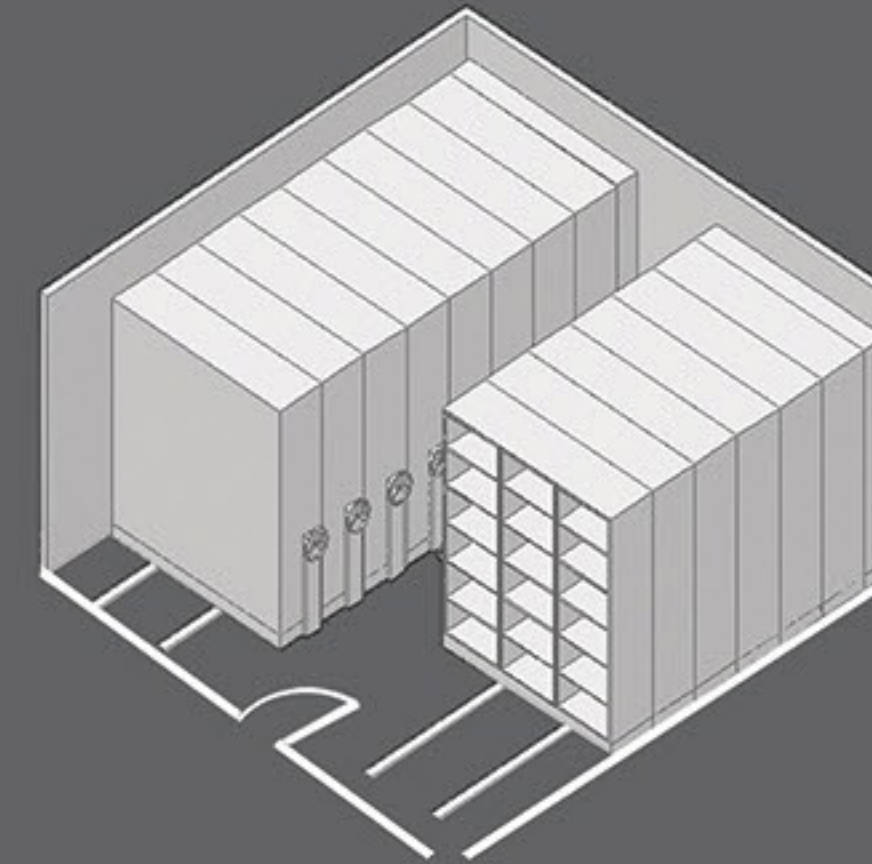


## ORDINARY SHELVING Preview Diagram

To illustrate the practicality of our product, we consider a room with dimensions 20 x 20 feet, we observe that we can only put around 8 or so fixed shelves in it and to protect them, the whole room must be locked and made airtight.

Less floor space means less area to heat, air condition, light and insure reducing building operating costs.

Make your facility more energy efficient with high density filing or storage shelving system.



## SPACESAVER SHELVING Preview Diagram

Now with the same room, and using our Dynamic Movable Shelving system, we see that we can easily put 15 shelves in the room with the added advantage of independent locking, dust and worry free operation and reliability.

Effectively doubling the available space, with added security and protection features

# WHERE SPACESAVING IS REQUIRED, OUR MOVABLE RACKS ARE THE IDEAL SOLUTION

Our product is an ideal solution in archiving, inventory and storage that yields unlimited possibilities.

We can utilize storage capacity space to a maximum by using our space saving system.

This high density movable storage concept is based on converting traditional aisles into usable storage space with full activity. We can double the storage capacity in the same Floor Area.

traditional aisles into usable storage space with full activity. We can double the storage capacity in the same Floor Area.

An ideal solution for archiving, inventory, warehouse and general storage. High density file shelving with color-coded file folders saves valuable floorspace and increases employee productivity.

We propose the solutions that will suit the user needs of size, storage capacity, functionality, dynamics and efficiency. Crank with blockade and lock, ensures the security. Solid frame ensures rack's stability and durability. Drive mechanism ensures easy movement.

# DYNA RACKING SOLUTIONS

## CREDENT OF USABILITY

Medium Duty  
Rack with Adjustable  
Shelves



Static Rack  
With Adjustable  
Shelves



Boltless Rack  
With Wooden  
Shelves



We provide a comprehensive range of racking & storage solutions for storing everything from small components, Cartons or Heavy objects on pallets.

# HEAVY DUTY RACKS

## WITH ADJUSTABLE OR SLIDING SHELVES



Heavy Duty Rack



SIZE  
Or as per requirement

MATERIAL  
MS

# STAINLESS STEEL FURNITURE WITH ADDED COMMON SENSE



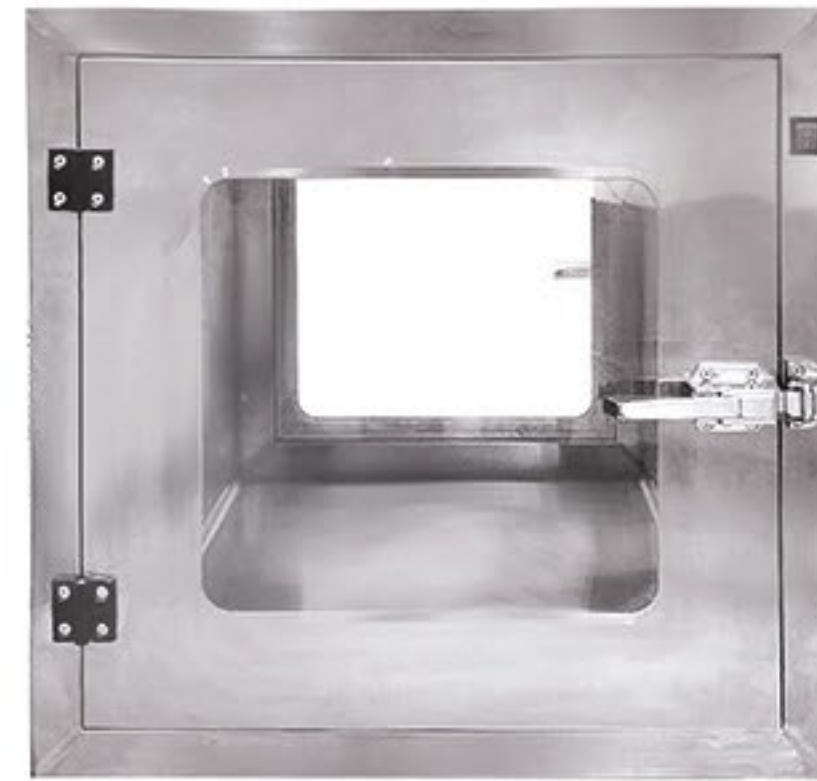
SS Cabinets

SIZE (Module)  
Or as per requirement  
MATERIAL  
SS



Cross Over Bench

Stainless Steel  
Chairs & Stools



Pass Through  
Window/Box

# STAINLESS STEEL DESIGN



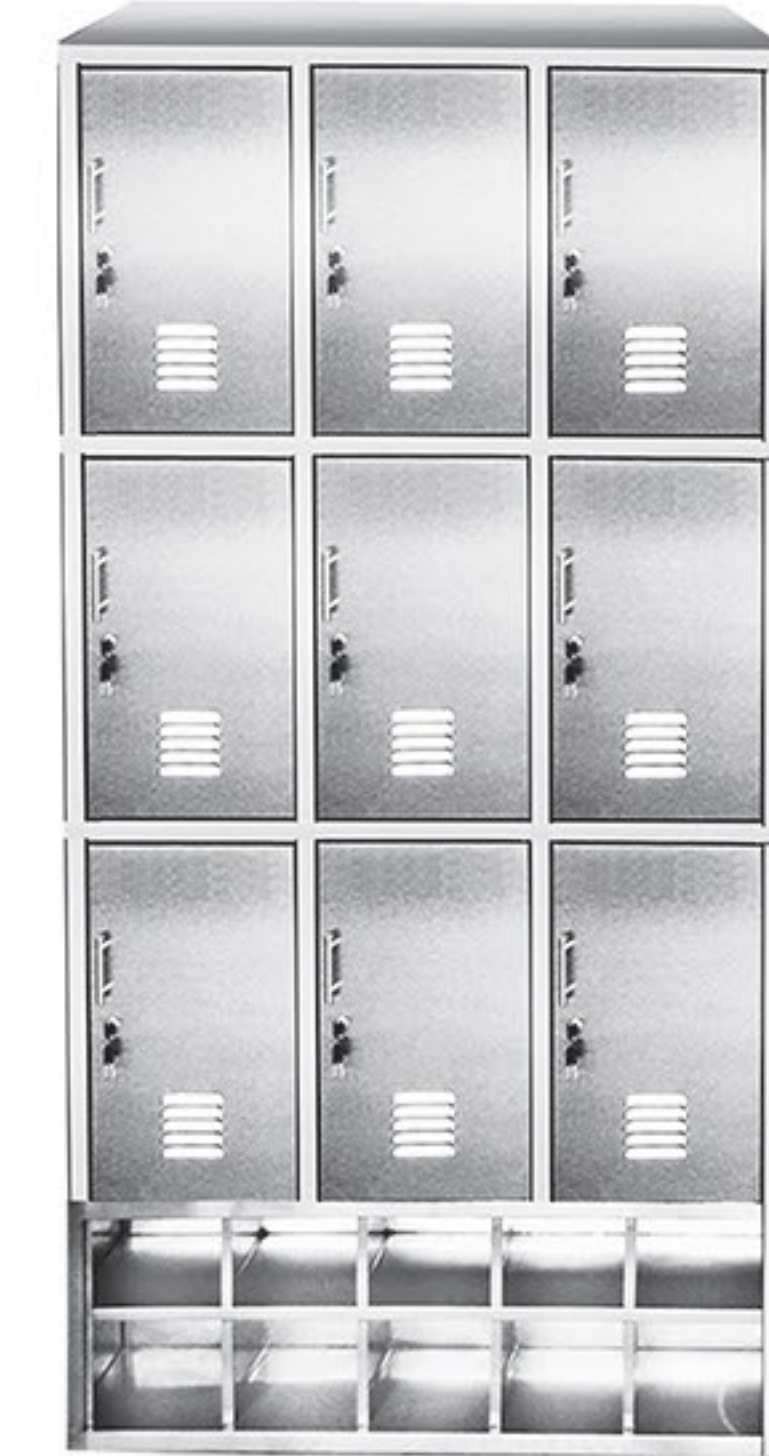
MS/Stainless Steel Door  
Open View

# ADDED COMMON SENSE

Stainless Steel Fabricated, Fully Customizable  
Extremely Practical



MS/Stainless Steel  
Door



Stainless Steel Lockers



Gowning Cabinet



01

SIZE (in)

30 x 24 x 48

MATERIAL

SS



02

Scrub Sink

03



SIZE (in)

24 x 34 x 36

MATERIAL

SS

04



SIZE (in)

30 x 24 x 33

MATERIAL

SS

# HOSPITAL FURNITURE ESSENTIALS

OUR SOLUTIONS ARE DIVERSE

01 Stainless Steel Tool Trolley

02 Stainless Steel Scrub Sink

03 Stainless Steel Trolley

04 Stainless Steel Trolley With 3 Shelves

05 Stainless Steel Platform Trolley

06 Stainless Steel Trolley

07 Mobile Cabinet With Drawers & Open Shelf

08 Mobile Cabinet With Drawers

# MANAGING STORAGE OR DISPOSING WASTE

WE HAVE TOOLS FOR ALL YOUR NEEDS



05

SIZE (in)

36 x 30 x 33

MATERIAL

SS



06

SIZE (in)

36 x 24 x 42

MATERIAL

SS

07



SIZE (in)

24 x 20 x 36

MATERIAL

SS

08



SIZE (in)

24 x 20 x 36

MATERIAL

SS

# ELECTRICAL & MECHANICAL WORKSTATIONS

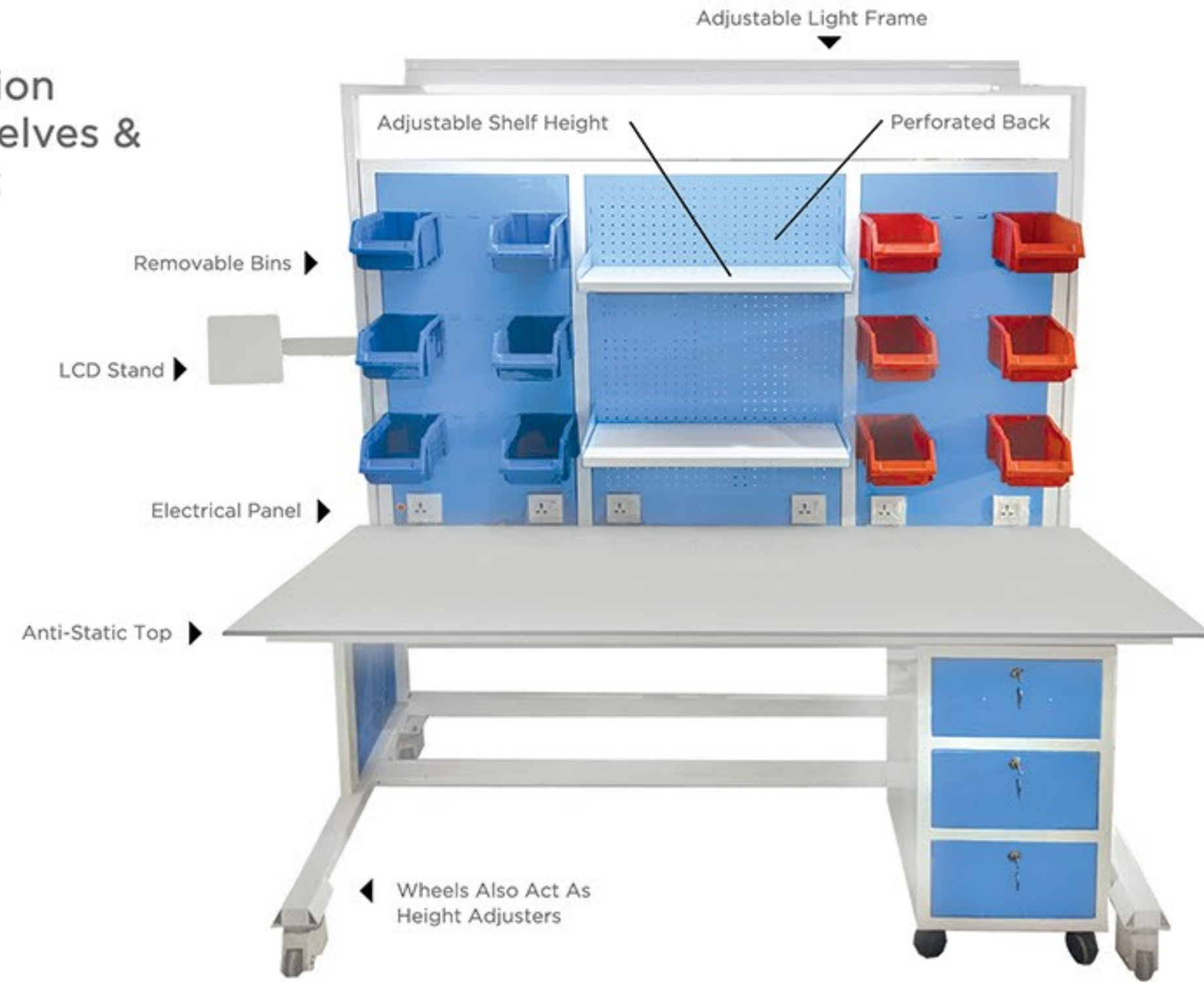
# IDEAL COMBINATION OF USABILITY & DURABILITY



Electrical Workstation With Adjustable Shelves & Suspended Cabinet

**SIZE (in)**  
72 x 36 x 84

**MATERIAL**  
MS Powder Coated



Electrical Workstation With Adjustable Bins & Mobile Cabinet

**SIZE (in)**  
72 x 30 x 84

**MATERIAL**  
MS Powder Coated

Electrical Workstation With Suspended & Overhead Wall Mounted Cabinets

**SIZE (in)**  
96 x 30 x 90

**MATERIAL**  
MS Powder Coated



Mechanical Workstation With Suspended Drawers Cabinet

**SIZE (in)**  
60 x 24 x 84  
or as required

**MATERIALS**  
MS



# TOOLS AND STORAGE MANAGEMENT



Tool Cabinet

Tool Cabinet (Open View)



Material Shifting Trolley



Plastic Pallet



Metal Pallet

Multi-Purpose Tool Trolley (A)



Multi-Purpose Tool Trolley (B)



Multi-Purpose Tool Trolley (C)

SIZE (in)  
21 x 18 x 32

MATERIALS  
MS



# CHEMICAL & CYLINDER STORAGE CABINETS

Storing flammable liquids in fire resistant safety cabinets is a simple way to reduce risk of damaging at your work place, no matter which chemicals are to be stored, our cabinets are the ideal solution for it all.



SIZE (in)

60 x 48 x 30/54

MATERIAL

MS

Perforated  
SS 304 Shelves



# DYNA CHEMICAL FUME HOODS

Making work areas safer by controlling exposure to toxic, offensive, or flammable gases and aerosols.



SIZE (in)

72 x 30 x 84

60 x 30 x 84

48 x 30 x 84

MATERIALS

MS, SS



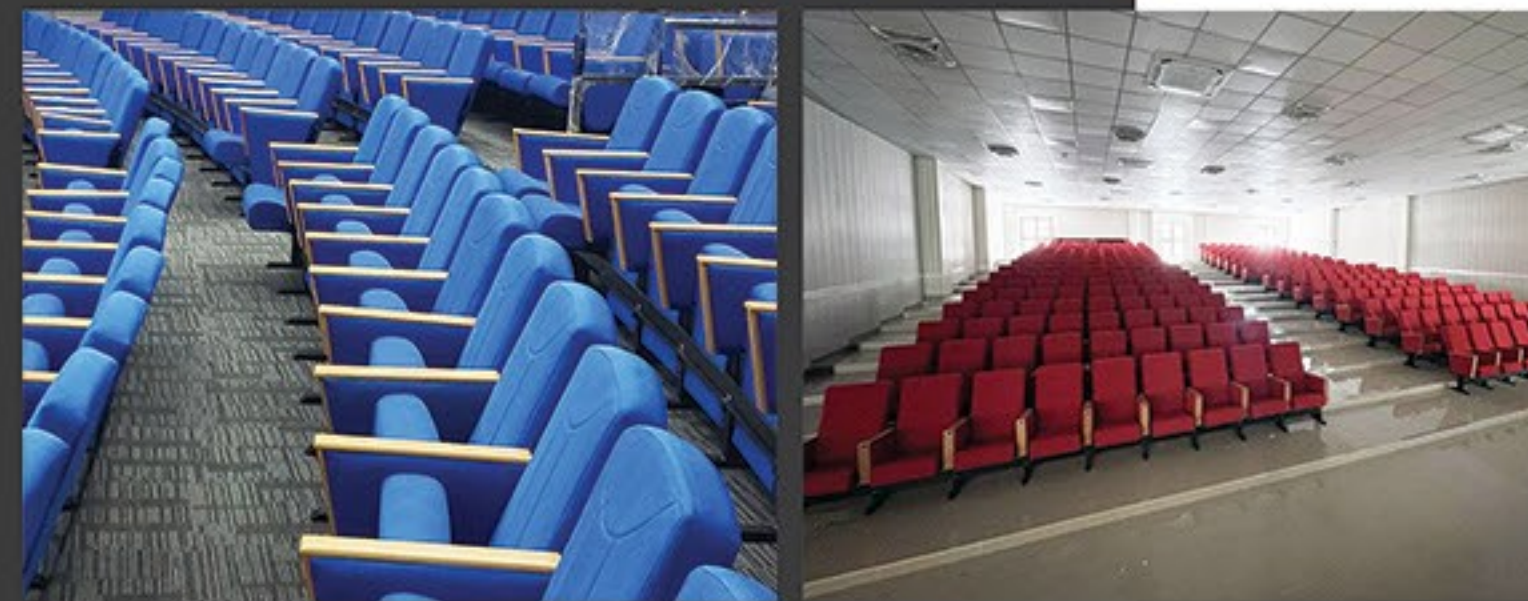




**ACTUAL VIEW**  
Actual Picture of Auditorium Chairs  
Installed at Customer Premises

# DYNA AUDITORIUM CHAIRS

MADE TO  
PROVIDE YOU  
THE BEST



Dyna chairs focus on innovative design & engineering with due consideration to body posture to extend utmost comfort while sitting even for longer hours.



Dyna Chair



Dyna Chair (With Tablet)



Dyna Executive Chair  
(With Tablet)



Dyna Economy

# DYNA OFFICE FURNITURE MADE TO PROVIDE YOU THE BEST

# DYNA KITCHENS COMMERCIAL OR GENERAL OUR SOLUTIONS ARE DIVERSE



Complete Office Furniture



Computer Workstations With File Cabinets



Office Work Station For 2 Persons



Office Work Station with Partition For 4 Persons



Office Work Station Back To Back For 4 Persons



Stainless Steel Spice Table



Stainless Steel Stove



Stainless Steel Kitchen Cutting Table



Stainless Steel Double Bowl Sink Table



CNC Laser Cutting (1 KW)



CNC Turret Punching Machine



CNC Laser Cutting (1.5 KW)



Shearing Machine



CNC Bending Machine (8')



CNC Bending Machine (10')



CNC Bending Machine (5')



Lathe Machine

# DYNAMIC ENTERPRISES' FACILITIES

## STATE OF THE ART MACHINERY

# OUR ESTEEMED CLIENTS & PARTNERS



UMT



DOW University Of Health Sciences



Coatinks



Organic Pharma



Lord's College Of Pharmacy



Pinnacle Biotech



ATCO Laboratories



GETZ Pharma

## Institutional Clients

- 01 University of The Punjab Lahore
- (a) Institute of Chemistry Lahore
- (b) Institute of Administrative Sciences Lahore
- (c) College of Earth & Environmental Sciences (CEES) Lahore
- (d) Under Graduate Studies Lahore
- (e) Botany Department Lahore
- 02 Quaid-e- Azam University Islamabad
- 03 University of the Lahore Lahore
- 04 Fauji Foundation University (FFU) Rawalpindi
- 05 Garrison University Lahore
- 06 Islamic Intl. Medical & Dental College Islamabad
- 07 National College of Arts (NCA) Lahore
- 08 Dental College Multan
- 09 Nishat Schools & Colleges Multan Multan
- 10 Balochistan University Baluchistan
- 11 Virtual University of Pakistan Lahore
- 12 UCEST Lahore
- 13 University of Culture & arts (UCA) Lahore
- 14 Pak Turk School Hyderabad
- 15 GIK Institute of Engineering Sciences & Technology KPK
- 16 Police Training Center Chung Lahore
- 17 Forman Christian College (FCC) Lahore
- 18 Nuclear Institute for Agriculture and Biology (NIAB) Faisalabad
- 19 University of Veterinary & Animal Sciences (UVAS) Lahore
- 20 PIEAS Islamabad
- 21 National University of Science & Technology (NUST) Islamabad
- 22 Nishter Medical & Dental College Multan
- 23 Salim Habib Education Complex Toba Tek Singh/Karachi
- 24 Dow University of Health Sciences Karachi
- 25 University of Veterinary & Animal Sciences (UVAS) Lahore
- 26 NUST Rawalpindi
- 27 University Of Education Lahore/Attock
- 28 Lord's Law College Lahore

## Pharmaceutical Clients

- 01 CHT Bezema Lahore
- 02 Getz Pharma / Astola Project Karachi
- 03 Hilton Pharma Karachi
- 04 Bosch Pharma Karachi
- 05 High noon Laboratories Lahore
- 06 Route 2 Health Lahore
- 07 Indus Pharma Lahore
- 08 Genetics Pharma / Genetics HealthCare Lahore
- 09 CSH Pharma Lahore
- 10 CCL Pharma Lahore
- 11 Macter Pharma Lahore
- 12 GMP Pharma Lahore
- 13 Himont Pharma Lahore
- 14 Abbot Labs Lahore
- 15 Shafi Reso Industrial Chemicals Lahore, Khi
- 16 Mac & Rains Lahore
- 17 Herbion Pharma Lahore, Khi

- 18 Kaizan Pharmat Karachi
- 19 Paktex Pharma Lahore
- 20 Bryon Pharma Peshawar
- 21 Pharmedic Pharma Lahore
- 22 Barrett Hodgson Pharma Karachi
- 23 Zenith Lab. Lahore
- 24 Hi-tech Pharma Lahore
- 25 ICI Pakistan (Pvt.) Ltd. Lahore
- 26 Dosaco Pharma Lahore
- 27 BF Bioscience Laboratory Lahore
- 28 Rasco Pharma Islamabad
- 29 Global Pharma Lahore
- 30 Stallion Pharma Lahore
- 31 Pharmagen Ltd. Rawalpindi
- 32 Bio Labs Lahore
- 33 Stand Pharm Pakistan (Pvt.) Ltd. Lahore
- 34 Mass Pharma Lahore
- 35 Martin Dow Karachi
- 36 Giltz Pharma Rawalpindi
- 37 Seattle Pharma Lahore
- 38 Searl Pharma Lahore
- 39 Ameer Pharma Sheikhupura
- 40 Vitex Pharma Faisalabad
- 41 Dynatis Pakistan (Pvt.) Ltd. Karachi
- 42 Bayer Pakistan (Pvt.) Ltd. Karachi
- 43 Radiant Pharma Lahore
- 44 Marhaba Laboratories Karachi
- 45 Barrett Hodgson Pharma Lahore
- 46 Pacific Pharmaceuticals Faisalabad
- 47 Axis Pharma Islamabad
- 48 Amson Vaccines & Pharma Karachi
- 49 Hudson Pharma Lahore
- 50 Kurative Pharma / Aptcure Pharma Karachi
- 51 Medisure Laboratories Pakistan Karachi
- 52 Magnus Pharma Faisalabad
- 53 Montis Pharma (Pvt.) Ltd. Lahore
- 54 Next Pharma Lahore
- 55 Hiranis Pharmaceuticals (Pvt.) Ltd. Karachi
- 56 Grand Pharma Rawalpindi
- 57 Biogen Pharma Rawalpindi
- 58 Global Pharma Islamabad
- 59 Rock Pharma Risalpur
- 60 Helix Pharma Karachi
- 61 Medipak Pharma Lahore
- 62 Mector Pharma Lahore
- 63 Biocel Pharma Lahore
- 64 Wilshire Laboratories Lahore
- 65 Aspin Pharma Karachi
- 66 Variant Pharma Lahore
- 67 SAMI Pharma Karachi
- 68 Saakh Pharma Karachi
- 69 Pharmedic Labs Lahore
- 70 Livewell Capsule Lahore

- 72 Health Capsule Faisalaabad
- 73 Atco Laboratories Karachi
- 74 Neophar Pharma Lahore
- 75 Organic Pharma Karachi
- 76 Hilton Pharma Karachi
- 77 Hinucon Pharma Karachi
- 78 Hooraa Pharma Karachi
- 79 Medevo Pharma Lahore

## Hospitals

- 01 Shaukat Khanum Memorial Trust Hospital Lahore / Peshawar
- 02 Saleem Memorial Trust Hospital Lahore
- 03 Ghurki Trust Teaching Hospital Lahore
- 04 Shifa Intl. Hospital Islamabad
- 05 Begum Akhter Rukhsana Memorial Trust Hospital Islamabad
- 06 Doctors Hospital Lahore
- 07 National Institute of Health (NIH) Islamabad
- 08 Fauji Foundation Islamabad
- 09 Nishtar Hospital Multan
- 10 Integrated Medical Care Hospital Lahore
- 11 Ammar Hospital Lahore
- 12 Mughal Eye Hospital Lahore
- 13 POB Eye Hospital Karachi
- 14 Tabba Kidney Hospital Karachi
- 15 Indus Hospital Lahore/Karachi

## Valuable Clients

- 01 Armed Forces Institute of Dentistry (AFID) Islamabad
- 02 Armed Forces Institute of Transfusion (AFIT) Pakistan
- 03 Tobishima Hyderabad
- 04 Servo Motor Oil Multan
- 05 Bestway Cement Mianwali
- 06 Terieco Karachi
- 07 National Development Complex (NDC) Islamabad
- 08 Pakistan Air Force Base (PAF) Throughout Pakistan
- 09 Rangers Head Quarters Lahore
- 10 General Head Quarters (GHQ) Islamabad
- 11 Combined Military Hospital (CMH) Throughout Pakistan
- 12 Punjab Forensic Science Agency Throughout Pakistan
- 13 UNDP
- 14 Australian Federal Police (AFP) Throughout Pakistan
- 15 DESTO Islamabad
- 16 KMDC Karachi
- 17 GTDMC Gujranwala
- 18 Dawn Bread Lahore
- 19 Metro Habib Cash & Carry Pakistan Throughout Pakistan
- 20 Combined Engineers Lahore
- 21 Ahmed Jamal Textile Mills Faisalabad
- 22 Sapphire Retail Limited Lahore
- 23 Packages Lahore
- 24 Over Seas Oil Terminal Karachi
- 25 BYCO Petroleum Karachi
- 26 World Health Organization (WHO) Islamabad
- 27 Pak Northern Rails Lahore

- 28 Pepsi Cola International Pakistan
- 29 Coca Cola Beverages Lahore
- 30 Textile Testing International Lahore
- 31 NOVA International Daska
- 32 Daewoo Battery Faisalabad
- 33 Bureau VERITAS Lahore
- 34 National Accountability Bureau Islamabad
- 35 US Consulate Lahore
- 36 Sparco Lahore
- 37 Efroz Chemical Industries Karachi
- 38 Naval Head Quarters Islamabad
- 39 ST Technologies Islamabad
- 40 PMO Taxila
- 41 Dabur Pakistan Lahore
- 42 E-Concepts / EMCO OFFISYS Karachi
- 43 Drug Testing Lab. (DTL ) Karachi
- 44 Drug Testing Lab. (DTL ) Lahore
- 45 Olympia Group Lahore
- 46 Asia Poultry Farm Multan
- 47 Sapphire Textile Lahore
- 48 KTDMC Karachi
- 49 Infrastructure Development Authority of Punjab. (IDAP) Lahore
- 50 Punjab Food Authority (PFA) Lahore/ Multan
- 51 The First Treet Manufacturing Modaraba Lahore
- 52 Gandhara Industries Ltd. Karachi
- 53 Six B Foods Lahore
- 54 Ravi Autos Lahore
- 55 Nestle Pakistan Sheikhupura
- 56 Prime Health Laboratories Islamabad
- 57 International Packaging Films (IPAK) Karachi
- 58 Big Bird Lahore
- 59 MDS Foods / Hardees Lahore
- 60 Ghafooria Traders Karachi
- 61 Qarshi Industries Lahore
- 62 Diamond Paints Lahore
- 63 Famsa Polymers Industry Karachi
- 64 Gulf Prefab Technologies Karachi
- 65 Rafhan Maize Products Faisalabad
- 66 The General Tyre and Rubber Company Karachi
- 67 Asian Environmental Services Lahore
- 68 Atlas Battery Karachi
- 69 Universal Packages Karachi
- 70 Hamdard Laboratories (WAQF) Karachi
- 71 Shezan International Ltd. Lahore
- 72 Unilever Tea Factory Khanewal
- 73 Tobishima Corporation (Pakistan Office) Throughout Pakistan
- 74 Sapphire Dairies (Pvt.) Ltd Lahore
- 75 Art Vision (Pvt.) Ltd Lahore
- 76 Interwood Mobil (Pvt.) Ltd Lahore
- 77 Shezan Foods Lahore
- 78 B. Braun Lahore
- 79 Golden Pearl Cosmetics Lahore
- 80 Goree Cosmetics Lahore
- 81 Fine Cosmetics Lahore